



Clinicopathological Studies and New Markers for *Trypanosoma evansi* in Experimentally Infected Rats

ASMAA ABDALLAH DARWISH¹, ENAS ABD EL-AZIZ TAHOUN², GEHAD RASHAD DONIA¹, RASHA SALAH MOHAMMED^{1*}

¹Department of Animal and Poultry Health, Animal and Poultry Production Division, DRC, Cairo, Egypt; ²Pathology Departments, Faculty of Veterinary medicine, University of Sadat City, Egypt.

Abstract | *Trypanosoma evansi* is a dangerous protozoal disease that usually results in severe economic losses in the camel producing countries. So, this study aimed to monitor some clinicopathological and pathological alterations associated with *T. evansi* infection experimentally and assess the diagnostic and prognostic value of matrix metalloproteinase-2 (MMP-2), matrix metalloproteinase-9 (MMP-9), creatine kinase (CK), cardiac troponin I and cholinesterase in *T. evansi* infection. In this study, 24 albino rats (12 males and 12 females) were used; samples were collected from 4 rats before the experiment (0 day) and from the rest rats at 7th, 14th, 21st, 28th, 35th day after intraperitoneal injection of *T. evansi*. Hematological results demonstrated a significant ($P < 0.05$) microcytic hypochromic anemia accompanied with a significant ($P < 0.05$) leukocytosis and lymphocytopenia in *T. evansi* infected rats until 21st day, then the anemia converted to macrocytic hypochromic anemia. The biochemical results showed a significant ($P < 0.05$) hypoproteinemia, hypoalbuminemia, decreased A/G ratio, hyperglobulinemia, hypoglycemia, hyperlipidemia, hypertriglyceridemia, hypochlesterolemia and a significant ($P < 0.05$) increase in the renal function tests, MMP-2, MMP-9, CK, cardiac troponin I and cholinesterase activities. The main lesions in the examined organ sections were necrosis, edema, fibrosis, inflammatory cell infiltrations and loss of structure. On the other hand, MMP-2, MMP-9, CK, cardiac troponin I and cholinesterase had good values of sensitivity, specificity and correlated efficiently with the other clinicopathological changes in *T. evansi* infected rats. Conclusion: this study showed clearly that *T. evansi* infection associated with several clinicopathological as well as histopathological changes and suggested MMP-2, MMP-9, CK, cardiac troponin I and cholinesterase as new markers for *T. evansi* infection.

Keywords | *Trypanosoma evansi*, Rats, Clinicopathological changes, New markers, Histopathological changes.

Received | June 03, 2019; **Accepted** | August 20, 2019; **Published** | October 25, 2019

***Correspondence** | Rasha Salah Mohammed, Department of Animal and Poultry Health, Animal and Poultry Production Division, DRC, Cairo, Egypt; **Email:** rashanonono2008@yahoo.com

Citation | Darwish AA, Tahoun EAE, Donia GR, Mohammed RS (2019). Clinicopathological studies and new markers for trypanosoma evansi in experimentally infected rats. Adv. Anim. Vet. Sci. 7(11): 977-985.

DOI | <http://dx.doi.org/10.17582/journal.aavs/2019/7.11.977.985>

ISSN (Online) | 2307-8316; **ISSN (Print)** | 2309-3331

Copyright © 2019 Mohammed et al. This is an open access article distributed under the Creative Commons Attribution License, which permits unrestricted use, distribution, and reproduction in any medium, provided the original work is properly cited.

INTRODUCTION

Trypanosomiasis is a serious parasitic infection that affects both human and animals, as it has several species. Among their most dangerous species *T. evansi*, which is a constraint in the expansion of camel breeding in the producing countries (Ahmadi-hamedani, et al., 2014; Zewdu, et al., 2018). Whereas, it affects widely different dromedaries resulting in severe economic losses related to the disease symptoms such as decreased milk production and body gain, abortion, severe damages in vital organs such

as kidney, heart, brain and finally death. The cost of the treatment and prophylaxis must be taken in consideration as another losses for camel trypanosomiasis. (Abd El-Baky and Salem 2011; Ahmadi-hamedani et al., 2014).

The nature of camel trypanosomiasis as a silent disease as well as its late detection, maximize its effect and decrease its recovery rates. So, there is a need to improve our information about hematological, biochemical and pathological changes related to the disease and find new diagnostic and prognostic tools for trypanosomiasis (Abd El-Baky and

Salem 2011).

Matrix metalloproteinase-2 (MMP-2) and matrix metalloproteinase-9 (MMP-9) are Zn containing, Ca dependent proteases, belong to a large group of endopeptidases known as matrix metalloproteinases (MMPs). MMPs are a part of the host innate immunity produced under the effect of the pro-inflammatory cytokines. They are degenerative molecules mainly responsible for extracellular matrix protein destruction, processing of some bioactive molecules, splitting of cell surface receptors, releasing of apoptotic ligand and inhibition of chemokines. In addition, they may take part in cellular proliferation, differentiation, adhesion, angiogenesis, apoptosis and inflammatory immune response regulation against different infections. They are secreted by different immune cells in a latent form (zymogen) then activated by different mechanisms at site of their work, and controlled by the tissue inhibitors of matrix metalloproteinases (Bruschi and Pinto 2013; Ortega et al., 2017). Regardless of their critical role in the mechanism of some physiological processes, they are closely related to the pathogenesis of different human diseases as chronic kidney diseases, blood vessels diseases, different types of cancer and were suggested to be a useful marker for *T. cruzi* and *T. brucei* infection in human (Gutierrez et al., 2008; Bautista-López et al., 2013; Bruschi and Pinto 2013). Surprisingly, there is too little information about MMPs significance in the animal diseases.

Hence, this work aimed to study some clinicopathological and pathological alterations of *T. evansi* infection experimentally to exclude the effect of any other factors on these changes rather than *T. evansi* infection. It also assessed the diagnostic and prognostic value of MMP-2, MMP-9, creatine kinase (CK), cardiac troponin I and cholinesterase in *T. evansi* infection and their correlations with the other clinicopathological changes associated with the disease.

MATERIAL AND METHODS

All ethical points regarding the laboratory animal's treatment were followed in this research. This study was carried on 24 rats (*Rattus norvegicus*, 12 males and 12 females) with average body weight 200 gm. They were let to adapt to the surrounding conditions before the start of the experiment.

First, 4 rats (control group (CG), 2 males and 2 females): were anaesthetized with diethyl ether and blood samples were collected by heart puncture before the start of the experiment (0 day).

The rest 20 rats (*T. evansi* infected rats (IR), 10 males and 10 females): were injected intraperitoneally with 0.5 ml serum of naturally infected camels with *T. evansi* (the di-

agnosis was done by giemsa-stain blood smears). Samples (blood by heart puncture and tissue from heart, kidneys, brain) were collected from IR at 7th, 14th, 21st, 28th and 35th day post infection (4 rats every time, 2 males and 2 females) after anesthesia with diethyl ether.

Blood samples: were divided in two sets of tubes: one contained EDTA was sent immediately for estimation of hematological parameters and the other one was plain (without anticoagulant) and clean whereby blood was let to coagulate and centrifugated at 3000 r.p.m. for 20 minutes at 37 °C then serum was separated in a clean *Eppendorf* tube for estimation of the rest biochemical parameters.

Hematological parameters were evaluated according to Feldman, et al. (2000), the biochemical analysis were estimated spectrophotometrically by using commercial kits supplied by Biodiagnostic company[®], serum MMP-2 and MMP-9 concentrations were measured by ELISA kits supplied by Cloud- Clone Corp company[®], CK were determined using ELISA kits supplied by MyBiosource company[®], serum cardiac troponin I levels were evaluated by ELISA kits supplied by RayBiotech company[®], serum cholinesterase was detected spectrophotometrically by kits supplied by Biomed, Egypt company[®] (all manual instructions were carefully followed).

The histopathological examination was done by sectioning the tissue samples into thin small cuts then fixing them rapidly using 10% neutral buffered formalin solution. Later, these sections were prepared and stained using (H & E) stain according to Bancroft and Gamble (2002).

STATISTICAL ANALYSIS

Measured parameters were presented as mean ± standard deviation (SD). SPSS program version 20 was used to compare between means of different statistical parameters (one-way ANOVA test), estimate the post hoc differences between means (a multiple comparison Tukey's HSD test) and calculate the correlations between the selected parameters (Pearson's simple correlation method). A difference was considerable significant at P < 0.05.

Graphed prism version 5 program was used to calculate the cut off points, sensitivity, specificity and likelihood ratio (LR) for the measured MMP-2, MMP-9, CK, cardiac troponin I and cholinesterase between IR and CG. The positive predictive value (PPV), negative predictive value (NPV), accuracy rate and percentage of increase of them were calculated according the next formulas:

$$PPV = \text{True positive} \div \text{Total positive} \times 100.$$

$$NPV = \text{True negative} \div \text{Total negative} \times 100.$$

$$\text{Accuracy rate} = (\text{True positive} + \text{True negative}) \div \text{Total population} \times 100.$$

Percentage of increase

$$= \frac{\text{(The mean value of the marker concentration in IR)} - \text{(The mean value of its concentration in CG)}}{\text{(The mean value of its concentration in CG)}} \times 100.$$

RESULTS

THE CLINICOPATHOLOGICAL RESULTS

Table (1) revealed that the IR suffered from a microcytic hypochromic anemia till the 21st day represented by a significant (P<0.05) decrease in red blood cell count (RBCs), hemoglobin concentration (Hb), packed cell volume (PCV), mean corpuscular volume (MCV), mean corpuscular hemoglobin (MCH), mean corpuscular hemoglobin

concentration (MCHC). Interestingly, PCV and MCV start to increase and the type of anemia changed to macrocytic hypochromic anemia. On the other hand, the leukogram of IR characterized with a significant leukocytosis symbolized by neutrophilia, monocytosis and eosinophilia, but the lymphocytes significantly decreased in IR. Regarding the biochemical changes, the data of Table (2) illustrated a significant (P<0.05) drop in serum concentrations of total protein, albumin, albumin/globulin ratio (A/G ratio), glucose, cholesterol, HDL-cholesterol, LDL-cholesterol in IR. On the contrary, the serum concentrations of globulin, total lipids, triglycerides, phospholipids, kidney function tests (blood urea nitrogen (BUN), creatinine (Cr)), MMP-2, MMP-9, CK, cardiac troponin I and cholinesterase significantly (P<0.05) enhanced in IR.

Table 1: The effect of the *T. evansi* infection on the hematological parameters of IR. Values mean ±SD.

Parameters	0 day	7 th day	14 th day	21 st day	28 th day	35 th day
RBCs (×10 ⁶ /μl)	4.68±0.70	2.90±0.06	2.32±0.11	1.60±0.13	1.23±0.04	1.21±0.01*
Hb (g/dl)	12.87±3.07	5.83±0.33	4.33±0.60	2.88±0.39	2.20±0.24	2.00±0.01*
PCV (%)	26.00±5.51	13.78±0.56	10.70±0.65	10.95±0.70	11.15±0.70	12.00±0.01*
MCV (fl)	56.33±4.30	47.60±0.95	46.05±1.02	68.43±2.26	90.59± 2.80	99.17±0.01*
MCH (pg)	27.27±2.65	20.11±0.72	18.56±1.70	17.89±1.01	17.85±1.37	16.53±0.01*
MCHC (%)	48.44±3.13	42.27±0.77	40.28±3.22	26.17±1.93	19.69±1.05	16.67±0.01*
TLC(×10 ³ /μl)	4.65±0.77	9.02±1.01	10.51±1.38	11.48±1.28	12.35±0.96	14.54±0.01*
Neutrophils(×10 ³ /μl)	2.20±0.43	6.65±0.60	8.05±0.93	8.93±0.81	9.73±0.50	11.20±0.01*
Lymphocytes(×10 ³ /μl)	1.63±0.15	1.45±0.13	1.32±0.10	1.15±0.13	0.96±0.11	0.90±0.01*
Monocytes(×10 ³ /μl)	0.45±0.13	0.48±0.17	0.62±0.16	0.66±0.14	0.73±0.09	0.92±0.01*
Eosinophils(×10 ³ /μl)	0.38±0.17	0.44±0.19	0.62±0.21	0.75±0.23	0.93±0.28	1.22±0.01*

The effect of the *T. evansi* infection considered significant when P <0.05 and indicated by (*).

Table 2: The effect of *T. evansi* infection on some biochemical parameters of IR. Values mean ±SD.

Parameters	0 day	7 th day	14 th day	21 st day	28 th day	35 th day
Total protein(g/dl)	7.18±0.33	6.89±0.34	6.62±0.32	6.37±0.26	6.17±0.32	6.13±0.07*
Albumin (g/dl)	4.40±0.32	3.48±0.22	2.27±0.12	1.89±0.09	1.45±0.09	1.15±0.07*
Globulin (g/dl)	2.78±0.10	3.42±0.16	4.35±0.21	4.48±0.18	4.72±0.23	4.98±0.14*
A\G	1.59±0.13	1.02±0.05	0.52±0.01	0.42±0.01	0.31±0.01	0.23±0.02*
Total lipids (mg/dl)	427.25±13.60	458.50±17.00	482.75±19.62	589.50±20.68	502.25±18.83	504.00±2.83*
Triglycerides (mg/dl)	140.00±5.89	158.50±7.19	180.75±6.80	189.50±8.85	201.75±13.18	208.00±0.01*
Phospholipids (mg/dl)	149.25±3.77	175.00±13.90	191.00±18.51	200.00±16.33	215.25±13.60	217.00±1.41*
Cholesterol (mg/dl)	138.50±9.57	125.00±3.83	111.00±6.00	100.00±5.16	85.01±8.25	81.00±1.41*
HDL-cholesterol(mg/dl)	42.50±1.91	37.00±2.58	33.00±2.58	30.25±1.63	25.00±2.58	24.00±0.01*
LDL-cholesterol (mg/dl)	95.50±4.43	88.00±1.63	78.00±3.65	70.00±3.65	60.00±5.88	57.00±1.41*
Glucose (mg/dl)	119.08±3.82	99.38±7.98	87.42±7.38	70.18±4.67	62.96±5.01	57.66±1.36*
BUN(mg/dl)	19.78±1.21	28.43±0.52	32.35±0.35	34.66±0.21	36.64±0.15	38.67±0.31*
Cr(mg/dl)	0.59±0.09	1.24±0.01	1.42±0.02	1.51±0.06	1.61±0.07	1.68±0.01*
MMP-2(ng/ml)	17.01±1.68	23.05±2.55	35.40±4.29	49.22±4.45	59.55±6.45	66.30±0.01*
MMP-9(ng/ml)	18.49±1.54	25.22±2.36	34.28±3.77	56.98±4.45	61.72±7.23	72.40±0.01*

CK (Pg/ml)	49.49±9.16	60.60±4.14	70.30±9.64	81.57±8.45	102.98±10.15	118.30±0.01*
Cardiac troponin I (ng/ml)	0.02±0.01	0.28±0.06	0.32±0.06	0.36±0.06	0.40±0.06	0.48±0.01*
Cholinesterase (u/l)	292.25±37.57	392.25±37.57	515.75±66.58	615.25±46.73	762.75±124.78	1184.00±0.01*

The effect of *T. evansi* infection considered significant when P <0.05 and indicated by (*).

Table 3: The cut off points, sensitivity, specificity, LR, PPV, NPV and accuracy rate of MMP-2, MMP-9, CK, cardiac troponin I, cholinesterase in the current experiment.

Statistical parameters	MMP-2	MMP-9	CK	Cardiac troponin I	Cholinesterase
Cut off points	18.20(ng/ml)	19.77(ng/ml)	56.55 (Pg/ml)	0.015 (ng/ml)	324.50 (u/l)
Sensitivity	100%	100%	100%	100%	100%
Specificity	75%	75%	75%	50%	75%
LR	4	4	4	2	4
PPV	95.24%	95.24%	95.24%	90.91%	95.24%
NPV	100%	100%	100%	100%	100%
Accuracy rate	95.83%	95.83%	95.83%	95.83%	95.83%

Table 4: The percentage of increase of MMP-2, MMP-9, CK, cardiac troponin I and cholinesterase in IR compared with CG.

Parameters	7 th day	14 th day	21 th day	24 th day	35 th day
MMP-2	35.51%	108.51%	189.36%	250.09%	289.77%
MMP-9	36.40%	85.40%	208.17%	233.80%	291.77%
CK	22.46 %	42. 21%	64.82%	106.67%	139.04%
Cardiac troponin I	130%	150%	170%	190%	230%
Cholinesterase	34.22%	76.48%	110.52%	160.99%	305.13%

Table 5: The correlation between duration, MMP-2, MMP-9, CK, cardiac troponin I, cholinesterase and the estimated clinicopathological parameters in IR (Pearson's correlation test, value=r-value).

Parameters	Duration	MMP-2	MMP-9	CK	Cardiac troponin I	Cholinesterase
Duration	1	0.974*	0.963*	0.939*	0.861*	0.924*
RBCs	-0.912*	-0.862*	-0.853*	-0.811*	-0.777*	-0.750*
Hb	-0.835*	-0.768	-0.756*	-0.677*	-0.878*	-0.664*
PCV	-0.682*	-0.604*	-0.585*	-0.506*	-0.815*	-0.495*
MCV	0.833*	0.851*	0.857*	0.863*	0.540*	0.837*
MCH	-0.782*	-0.680*	-0.668*	-0.587*	-0.812*	-0.598*
MCHC	-0.963*	-0.936	-0.944*	-0.875*	-0.767*	-0.847*
TLC	0.905*	0.909*	0.892*	0.911*	0.986*	0.872*
Neutrophils	0.913*	0.896*	0.879*	0.880*	0.985*	0.839*
Lymphocytes	-0.919*	-0.839*	-0.834*	-0.760*	-0.713*	-0.769*
Monocytes	0.750*	0.821*	0.827*	0.883*	0.750*	0.850*
Eosinophils	0.804*	0.884*	0.871*	0.933*	0.803*	0.902*
Total protein	-0.809*	-0.693*	-0.693*	-0.580*	-0.582*	-0.603*
Albumin	-0.958*	-0.916*	-0.897*	-0.838*	-0.864*	-0.819*
Globulin	0.931*	0.938*	0.909*	0.889*	0.926*	0.847*
A\G	-0.919*	-0.882*	-0.859*	-0.806*	-0.909*	-0.774*
Total lipids	0.828*	0.718*	0.704*	0.652*	0.681*	0.635*
Triglycerides	0.936*	0.859*	0.843*	0.795*	0.780*	0.775*
Phospholipids	0.862*	0.755*	0.741*	0.679*	0.668*	0.663*

Cholesterol	-0.963*	-0.900*	-0.885*	-0.829*	-0.777*	-0.809*
HDL-cholesterol	-0.947*	-0.879*	-0.859*	-0.811*	-0.777*	-0.785*
LDL-cholesterol	-0.964*	-0.905*	-0.891*	-0.832*	-0.771*	-0.815*
Glucose	-0.956*	-0.898*	-0.895*	-0.816*	-0.811*	-0.794*
BUN	0.924*	0.897*	0.882*	0.853*	0.933*	0.819*
Cr	0.881*	0.816*	0.798*	0.772*	0.920*	0.732*

Statistical significance of correlations * was recorded when $P < 0.5$.

Concerning the assessment of MMP-2, MMP-9, CK, cardiac troponin I and cholinesterase importance in the diagnosis and prognosis of *T. evansi* infection, Table (3) elucidated that they are sensitive markers for *T. evansi* but MMP-2, MMP-9, CK and cholinesterase had higher values of specificity, LR and PPV than cardiac troponin I. On the other hand, Table (4) clarified that the percentage of increase for them was fluctuating, whereas cardiac troponin I scored the highest percentage of increase at the 7th and 14th day. Otherwise, MMP-9 recorded the better percentage of increase at the 21st day and MMP-2 was the best at 28th day. On the other side, by the end of the study cholinesterase percentage of increase was the superior.

Table (5) illustrated a significant ($P < 0.05$) negative correlation between the experiment duration and RBCs, Hb, PCV, MCH, MCHC, lymphocytes, total protein, albumin, A\G, glucose, cholesterol, HDL-cholesterol, LDL-cholesterol as well as a significant ($P < 0.05$) positive correlation between the experiment duration and MCV, TLC, neutrophils, monocytes, esinophils, globulin, total lipids, triglycerides, phospholipids, kidney function tests, CK, cardiac troponin I, MMP-2, MMP-9 and cholinesterase in IR. A significant ($P < 0.05$) negative correlation was also recorded between serum MMP-2, MMP-9, CK, cardiac troponin I, cholinesterase and RBCs, Hb, PCV, MCH, MCHC, lymphocytes, total protein, albumin, A\G, glucose, cholesterol, HDL-cholesterol, LDL-cholesterol as well as a significant ($P < 0.05$) positive correlation between MMP-2, MMP-9, CK, cardiac troponin I, cholinesterase and MCV, TLC, neutrophils, monocytes, esinophils, globulin, total lipids, triglycerides, phospholipids and kidney function tests in IR.

HISTOPATHOLOGICAL RESULTS

The heart lesions in male and female rats, began at the 7th day with single cell necrosis of heart muscle, mild congestion, inflammatory cell infiltration and edema in the interstitial tissue. These lesions became marked and increased in severity toward 35th day. The fibrosis around blood vessels began to appear from 21st day and increased in severity toward 35th days. A marked necrosis of heart muscles and loss of striation were seen at 28th, 35th day (Figure 1). While, the microscopic examination of the male and female rats kid-

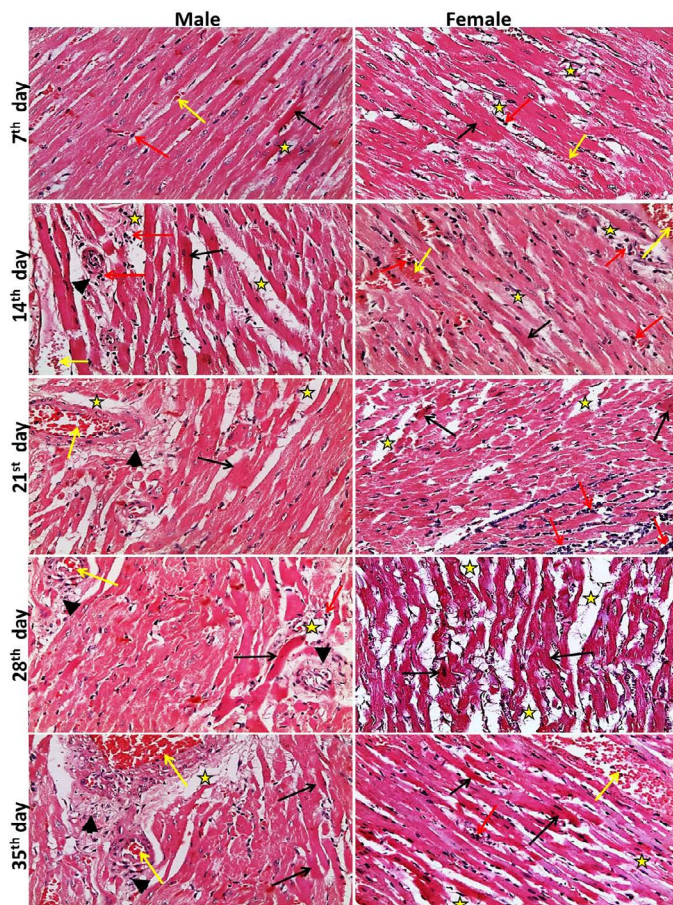


Figure 1: Representative photomicrographs of heart sections of male and female rats at 7th, 14th, 21st, 28th, 35th days (H&E stain X20) {Interstitial edema (stars), congestion (yellow arrows), inflammatory cell infiltration (red arrows), necrotic muscles (black arrows), perivascular fibrosis (head arrows)}.

neys showed at the 7th day, normal size of glomerular tuft with mild vacuolar degeneration of glomerular cells, cloudy swelling and necrosis of sporadic renal tubules especially in male, mild edema and inflammatory cell infiltration were also seen. Then at the 14th day, atrophied glomerular tuft and widening of Bowman's space beside the same lesions found at 7th day but increased in severity. Inflammatory cell infiltration became marked from the 21st day and increase in severity toward the 35th day. While, dilatation of collecting and medullary tubules with hyaline casts and fibrosis around glomeruli and blood vessels began to appear from 21st day and increased in severity toward the 35th day (Fig-

ure 2). The histopathological examination of the male and female rat brains started at the 7th day, with necrosis of some neurons, features of neuronal degeneration as neuronophagia, perineural satellitosis and perivascular cuffing (infiltration of mononuclear cells in the Virchow-Robin space around congested blood vessels). Necrotic neurons with perineural edema increased in number from the 14th day toward the 35th day. Demyelination of most parts of brain tissues began to appear from 21st day and increase in severity toward the 35th day (Figure 3).

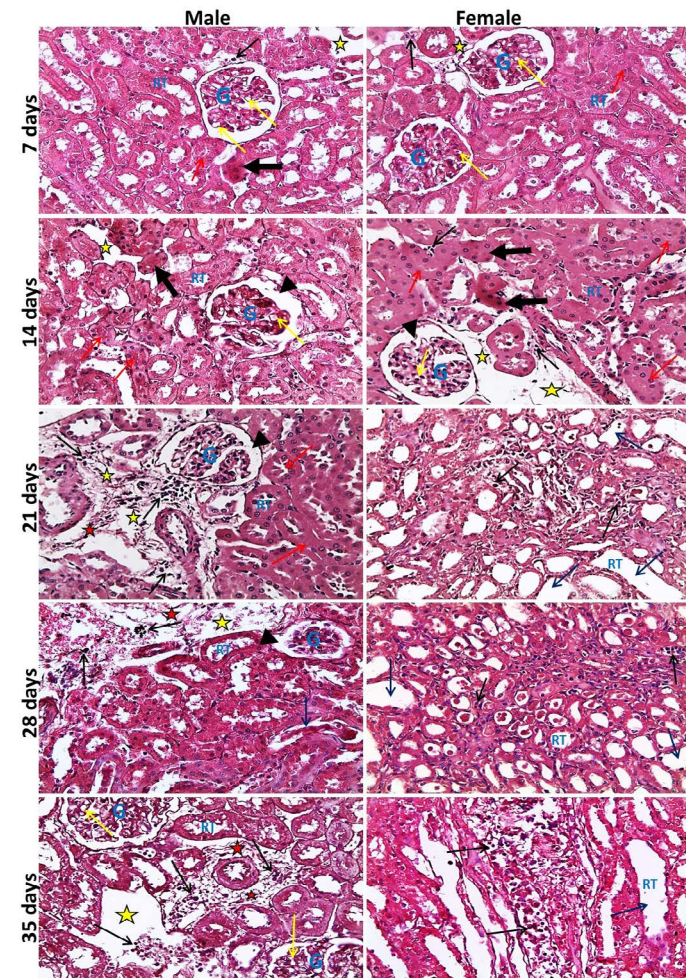


Figure 2: Representative photomicrographs of kidney sections of male and female rats at 7th, 14th, 21st, 28th, 35th days (H&E stain X20) {glomeruli (G), renal tubules (RT), widening of Bowmans space (head arrows), vacuolar degeneration of glomerular cells (yellow arrows), necrotic renal tubules (thick black arrows), cloudy swelling of renal tubules (red arrows), dilated renal tubules (blue arrows), inflammatory cell infiltration (black thin arrows), edema of interstitial tissue (yellow stars), fibrosis (red stars).

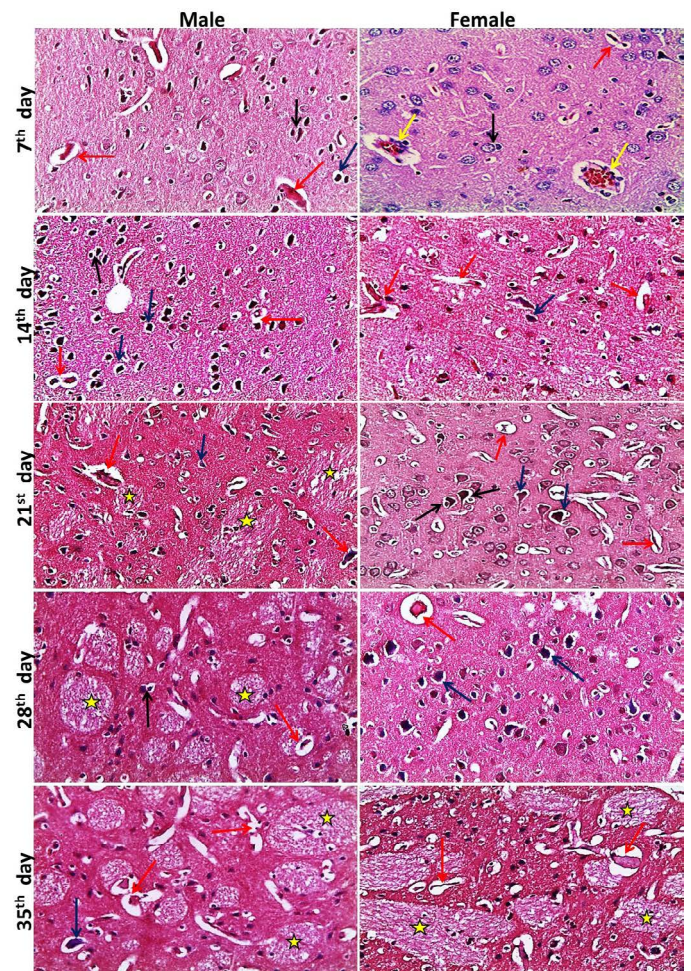


Figure 3: Representative photomicrographs of brain sections of male and female rats at 7th, 14th, 21st, 28th, 35th days (H&E stain X20) {Perivascular cuffing (yellow arrows), neuronophagia (red arrows), perineural satellitosis (black arrows), necrotic neurons with perineural edema (blue arrows), demyelination (stars).

DISCUSSION

T. evansi is a constraint hinders the camel breeding expansions in the producing countries, as it usually attacks different camel species resulting in high morbidities, mortalities and several economic losses. No doubt that, the awareness with the clinicopathological and pathological changes associated with disease may help in developing more effective therapeutic interventions and avoiding a part of its economic losses (Abd El-Baky and Salem 2011; Ahmadi-hamedani et al., 2014).

Concerning the hematological changes, the data of the current study agreed with the common believe that *T. evansi* infection usually accompanied with anemia described morphologically as microcytic hypochromic and etiologically as hemolytic (Abd El-Baky and Salem 2011; Ahmadi-hamedani et al., 2014). Several factors may be involved

in this hemolytic anemia mechanism such as the mechanical destruction of RBCs due to the presence of the parasite in the blood stream and its metabolic activities and the release of trypanosomal sialidase enzyme that hydrolyzes the sialic of RBCs membrane causing its destruction as well as inhibits the erythropoiesis (Ahmadi-hamedani et al., 2014). In addition the innate immunity of the host itself participates in the exacerbation of this anemia by different ways, as the oxidative damage of RBCs and the hemodilution due to removal of large amounts of RBCs in spleen and haemal lymph nodes by the activated mononuclear phagocytic system (Zewdu et al., 2018). The transformation of anemia from microcytic hypochromic to macrocytic hypochromic anemia after the 21st day and the positive correlation between the experiment duration and MCV referred to the bone marrow response by releasing the reticulocytes and immature RBCs in the circulating blood (Zewdu et al., 2018). On the other hand, the outstanding neutrophilia, monocytosis, eosinophilia and subsequent leukocytosis in IR in the present study, are mainly linked to the immune response of the host against the parasite and the activation of the mononuclear phagocytic system. Besides that, the stress connected with the diseases may play a role in this neutrophilic leukocytosis by stimulating the endogenous corticosteroid production (Ahmadi-hamedani et al., 2014). Otherwise, the eosinophilia is a characteristic feature of different parasitic infection because of the hypersensitivity reaction (Abd El-Baky and Salem, 2011).

In connection with biochemical changes, the detected hypoproteinemia and decreased A/G here, is due to the prominent hypoalbuminemia recorded along the course of the disease, which fundamentally resulted from the anorexia and hypoxic hepatic injury related to the *T. evansi* infection (Ahmadi-hamedani et al., 2014; Mbaya et al., 2014). Moreover, the acute phase response and the oxidative stress accompanied the disease are closely involved in this hypoalbuminemia whereas, the albumin is a strong negative acute phase reactant and antioxidant (Ahmadi-hamedani et al., 2014; Hussain et al., 2016). Meanwhile, the obtained hyperglobulinemia was assigned to the immune response against *T. evansi* either innate or humeral and the dependent positive acute phase proteins and antibodies production (El-Bahr and El-Deeb 2016).

Regarding the described hyperlipidemia in IR, the serum total lipid concentrations mostly affected by the serum levels of triglycerides and cholesterol. In the present experiment the triglyceride increase, override the cholesterol decrease but not very much. The observed hypertriglyceridemia is closely attached with the inhibition of lipoprotein lipase enzyme by the pro-inflammatory cytokines, which secreted as a part of the acute phase response of the host against the *T. evansi* infection. This enzyme is the major promoter of triglycerides clearance from the blood by en-

hancement their storage in the adipose tissue and its inhibition leading to the accumulation of triglycerides in the blood (Ngure et al., 2008). On contrast, the above mentioned hypocholesterolemia was attributed to the oxidative stress associated with *T. evansi* infection and the nature of HDL-cholesterol as anti-oxidant. Furthermore, *T. evansi* consumes the host lipids and cholesterol because of its inability to create the required cholesterol and lipids for her growth and multiplication (Adamu et al., 2008; Eze et al., 2015). In the same way, a marked hypoglycemia was demonstrated in our results whereas *T. evansi* uses most of the host blood glucose to cover her energy needs. Moreover, it hinders glucose liberation from the gluconeogenic pathways of the host (Mbaya et al., 2014).

The raised kidney function tests, serum CK and cardiac troponin I concentrations in the current experiment indicated severe renal, skeletal and cardiac muscles damages. Additionally, the energy imbalance usually connected with the parasite activity, stimulates CK secretion to restore energy balance (Tejero et al., 2010; Abd El-Baky and Salem 2011; El-Deeb and El moslemany 2015; Rio and Bm, 2017). Consistently, the serum MMP-2 and MMP-9 which pave the way for the inflammatory cell migration, parasite movement, tissue damage and disrupt the blood brain barrier integrity (Bautista-López et al., 2013; Bruschi and Pinto, 2013), showed an enhanced activity in this research as well as in human *trypanosomiasis* before (Gutierrez, et al., 2008; Bruschi and Pinto 2013). While, the elevated cholinesterase levels in this work and in a former rabbit experimental *T. evansi* infection, are closely attached to their indirect pro-inflammatory role by attenuation the anti-inflammatory action of the Acetyl choline (Costa et al., 2012). Logically, the positive correlation between the kidney function tests, CK, cardiac troponin I, MMP-2, MMP-9, cholinesterase and the experiment duration cleared that the kidney, heart, skeletal muscles and brain degeneration in *T. evansi* infection is progressive and continuous.

The above-mentioned clinicopathological changes were supported by the histopathological findings in this work, which showed mainly necrosis, edema, inflammatory cell infiltrations, fibrosis and loss of structure in the examined organs. These lesions started mild at the 7th day, increased gradually until reaching the maximum severity by the end of the experiment. Generally, these pathological changes were attributed to the toxins liberated by the parasites, presence of the parasite in the blood vessels and impairment of the blood supply to the affected organs, hypoglycemia related the disease and the migration of the parasite and the subordinate tissue damages. Besides that, the deposition of the immune complexes and the inflammatory cells impair the organs functions and structures (Bal et al., 2012). Similar alterations were noticed before in experi-

mental *T. evansi* infection in Swiss albino mice and experimental *T. vivax* infection in calves (Bal et al., 2012; Tesfu 2014).

In connection with MMP-2, MMP-9, CK, cardiac troponin I and cholinesterase value in the diagnosis and prognosis of *T. evansi* infection, the data of Table (3) and Table (4) proposed their usage as sensitive markers for the disease. Moreover, their correlation with the other estimated parameters in IR (Table 5), stated them as good indicators for other clinicopathological changes linked to *T. evansi* infection and reflected their participation in the pathogenesis of the disease. It worth to mention that, the specificity, LR and PPV values gave the priority for MMP-2, MMP-9, CK, cholinesterase on cardiac troponin I, while the fluctuating percentages of increase didn't suggested any preference for one marker on the others.

Finally, this study cleared that *T. evansi* infection associated with several clinicopathological as well as histopathological changes correlated with the infection duration, which may be taken in consideration to reduce the side effects of the disease and develop the supportive treatment for the diseased animals. MMP-2, MMP-9, CK, cardiac troponin I and cholinesterase may be new markers for *T. evansi* infection but for more thoroughness, they should be studied in naturally infected dromedaries.

CONFLICT OF INTEREST

The authors have no conflict of interest.

AUTHORS CONTRIBUTION

All authors contributed equally.

REFERENCES

- Abd El-Baky AA, Salem SI (2011). Clinicopathological and cytological studies on naturally infected camels and experimentally infected rats with trypanosoma evansi. *World Appl. Sci. J.* 14(1): 42–50.
- Adamu S, Ige A, Jatau I, Neils J, Useh N, Bisalla M, Ibrahim N, Nok A, Esievo K (2008). Changes in the serum profiles of lipids and cholesterol in sheep experimental model of acute African trypanosomosis. *African J. Biotechnol.* 7(12): 2090–2098. <https://doi.org/10.5897/AJB08.011>
- Ahmadi-hamedani M, Ghazvinian K, Darvishi M (2014). Hematological and serum biochemical aspects associated with a camel (*Camelus dromedarius*) naturally infected by *Trypanosoma evansi* with severe parasitemia in Semnan, Iran. *Asian Pacific J. Trop. Biomed.* 4(9): 743–745. <https://doi.org/10.12980/APJTB.4.2014APJTB-2014-0053>
- Bal MS, Singla LD, Kumar H, Vasudev A, Gupta K, Juyal PD (2012). Pathological studies on experimental *Trypanosoma evansi* infection in Swiss albino mice. *J. Parasit. Dis.* 36(2): 260–264. <https://doi.org/10.1007/s12639-012-0120-5>
- Bancroft JD, Gamble M (2002). “Theory and Practice of Histological Techniques”, In: Swisher, B. (ed.), *Microorganisms*, Churchill Livingstone, Philadelphia.
- Bautista-López N, Morillo C, López-Jaramillo P, Quiroz R, Luengas C, Silva S, Galipeau J, Lalu M, Schulz R (2013). Matrix metalloproteinases 2 and 9 as diagnostic markers in the progression to Chagas cardiomyopathy. *Am. Heart J.* 165(4): 558–66.
- Bruschi F, Pinto B (2013). The Significance of Matrix Metalloproteinases in Parasitic Infections Involving the Central Nervous System. *Pathogens.* 2(1): 105–129. <https://doi.org/10.3390/pathogens2010105>
- Costa MM, Silva AS, Paim FC, França R, Dornelles GL, Thomé GR, Serres J. DS, Schmatz R, Spanevello RM, Gonçalves JF, Schetinger MC, Mazzanti C MA, Lopes STA, Monteiro SG (2012). Cholinesterase as inflammatory markers in a experimental infection by *Trypanosoma evansi* in rabbits. *Anais Da Academia Brasileira de Ciências.* 84(4): 1105–1113. <https://doi.org/10.1590/S0001-37652012005000062>
- El-Bahr S, El-Deeb W (2016). *Trypanosoma evansi* in naturally infected Dromedary Camels: Lipid profile, oxidative stress parameters, acute phase proteins and proinflammatory cytokines. *Parasitology.* 143(4): 518–522. Retrieved from <https://doi.org/10.1017/S0031182016000123>
- El-Deeb WM, El moslemany AM (2015). Cardiac and oxidative stress biomarkers in *Trypanosoma evansi* infected camels: diagnostic and prognostic prominence. *Parasitology.* 142(6): 767–772.
- Eyob E, Matios L (2013). Review on camel trypanosomosis (surra) due to *Trypanosoma evansi*: Epidemiology and host response. *J. Vet. Med. Anim. Health.* 5(12): 334–343. <https://doi.org/10.5897/JVMAH2013.0236>
- Eze J, Agbo A, Ugwu L (2015). Comparative Study on the Effect of *Trypanosoma Brucei*, *Trypanosoma Congolense* and Mixed Infection on Lipid Profile of Pigs. *Int. J. Livest. Res.* 5(9): 36. <https://doi.org/10.5455/ijlr.20150824041039>
- Feldman BF, Zinkl JC, Jain NC (2000). “Schalm’s Veterinary Hematology” 5th (ed.), Lippincott Williams & Wilkins, Philadelphia, London. (5th (ed.).
- Gutierrez F, Lalu M, Mariano F, Milanezi C, Cena J, Gerlach R, Santos J, Torres-Dueñas D, Cunha F, Schulz R, Silva J (2008). Increased Activities of Cardiac Matrix Metalloproteinases Matrix Metalloproteinase (MMP)–2 and MMP-9 Are Associated with Mortality during the Acute Phase of Experimental *Trypanosoma cruzi* Infection. *J. Infect. Dis.* 197(10): 1468–1476. <https://doi.org/10.1086/587487>
- Hussain R, Khan A, Abbas R, Ghaffar A, Abbas G, Rahman T, Ali F (2016). Clinico-hematological and biochemical studies on naturally infected camels with trypanosomiasis. *Pakistan J. Zool.* 48(2): 311–316.
- Mbaya AW, Kumshe HA, Dilli HK (2014). Serum biochemical changes in dromedaries experimentally infected with *Trypanosoma evansi* and treated with melarsenoxide cysteamine hydrochloride. 84(4): 377–385.
- Ngure M, Ndungu J, Ngotho J, Nancy M, Maathai R, Gateri L (2008). Biochemical changes in the plasma of vervet monkeys (*Chlorocebus aethiops*) experimentally infected with *Trypanosoma brucei rhodesiense*. *J. Cell Anim. Biol.* 2(7): 150–157. Retrieved from <http://www.academicjournals.org/JCAB>
- Ortega Zamora Y, Escamilla Rojas L, Villa Sandoval E, Vela Porras J, Cossio Contrera E, Cubides Romero S, Carreño

- Ramirez P, Urriago Losada H, De los Rios C, Gomez Mahecha D, Lovera Serrano K, Barreto Montaña J, Narvaez Caicedo VF (2017). Chagas disease immunogenetics: elusive markers of disease progression. *Expert Rev. Cardiovas. Therap.* 15(5): 367–376. <https://doi.org/10.1080/14779072.2017.1317591>
- Rio N, Bm A (2017). Assessment of Acetylcholinesterase , Creatine Kinase and Lactate Dehydrogenase as Biomarkers of *Trypanosoma brucei* Infection in Dogs. *J. Vet. Med. Surg.* 1(2): 1–5. <https://doi.org/10.4172/2574-2868.100009>
 - Tejero F, Arias-Mota LL, Roschman-González A, Aso PM, Finol HJ (2010). *Trypanosoma evansi*: Ultrastructural cardiac muscle and cardiac microvasculature changes in experimental murine infections. *Acta Scient. Vet.* 38(3): 279–285.
 - Tesfu F (2014). Serum Biochemical, Haematological and Pathological Changes in Calves experimentally infected with *T. vivax* isolated from tsetse and non tsetse infected areas of north west Ethiopia after treatment with diminazen acetate and isometamidium chloride, Msc Thesis, Addis Ababa University College Vet. Med. Agric.
 - Zewdu A, Negash A, Assen A, Yaregal B (2018). Camel Trypanosomosis : A Review on Diagnostic Approaches and Immunological Consequences. 7(3): 105–113. <https://doi.org/10.5829/idosi.apg.2016.7.3.104154>.