



Virulence Potential, Antimicrobial Susceptibility and Phylogenetic Analysis of *Corynebacterium pseudotuberculosis* Isolated from Caseous Lymphadenitis in Sheep and Goats in Duhok City, Iraq

REZHEEN F. ABDULRAHMAN*

Pathology and Microbiology Department, Collage of Veterinary Medicine, University of Duhok, Duhok, Kurdistan Region, Iraq.

Abstract | Caseous lymphadenitis is a bacterial disease caused by *Corynebacterium pseudotuberculosis* affecting sheep and goats worldwide. It has been previously shown that the CLA is highly prevalent in sheep and goats in Duhok city. Therefore, this study is aimed to study virulence genes, the susceptibility pattern toward antimicrobial agents and to analyse the phylogenetic relationship of *C. pseudotuberculosis* based on the partial *rpoB* gene sequences. The results showed that the virulence genes including *pld*, *fagA*, *B*, *C* and *D* were identified 100% in all 22 isolates used in this study. Antibiotics sensitivity test showed varying degrees of susceptibility patterns against cefotaxime, clarithromycin, gentamicin, rifampin, amoxicillin and trimethoprim/sulphamethoxazole. The isolates were found to be sensitive 100% to chloramphenicol, doxycycline, norfloxacin, ciprofloxacin, clindamycin, erythromycin, ceftriaxone, levofloxacin. The overall degree of resistance was very low, with the exception of amoxicillin which was 81.8%. Nucleotide sequence analysis of the 22 *rpoB* sequences detected the overall similarity of 97, 98, 99 and 100% with biovar *ovis* of the reference sequences. Phylogenetic tree of partial sequences of the *rpoB* gene showed that the biovar *ovis* isolates from both sheep and goat are grouped together in the same lineage and the nucleotide variation between the sequences does not change the protein expression. In conclusion, for the first time in Duhok and in Iraq, phylogenetic tree clearly confirmed the *C. pseudotuberculosis* subspecies differentiation based on *rpoB* sequences from sheep and goats with CLA.

Keywords | *C. pseudotuberculosis*, Virulence; antibiotic, Phylogenetic analysis, Sheep and goat, Duhok

Received | March 12, 2021; **Accepted** | March 17, 2021; **Published** | May 25, 2021

***Correspondence** | Rezheen F. Abdulrahman, Pathology and Microbiology Department, Collage of Veterinary Medicine, University of Duhok, Duhok, Kurdistan Region, Iraq; **Email:** rezheen_fatah@uod.ac

Citation | Abdulrahman RF (2021). Virulence potential, antimicrobial susceptibility and phylogenetic analysis of *corynebacterium pseudotuberculosis* isolated from caseous lymphadenitis in sheep and goats in duhok city, iraq. *Adv. Anim. Vet. Sci.* 9(6): 919-925.

DOI | <http://dx.doi.org/10.17582/journal.aavs/2021/9.6.919.925>

ISSN (Online) | 2307-8316; **ISSN (Print)** | 2309-3331

Copyright © 2021 Abdulrahman. This is an open access article distributed under the Creative Commons Attribution License, which permits unrestricted use, distribution, and reproduction in any medium, provided the original work is properly cited.

INTRODUCTION

C. pseudotuberculosis is a Gram-positive, pleomorphic, non-motile, non-capsulated, non-spore forming, facultative intracellular microorganism causing caseous lymphadenitis (CLA) in sheep and goats (Baird and Fontaine, 2007; Guimarães et al., 2011; Umer et al., 2017; Parin et al., 2018; Guerrero et al., 2018). *C. pseudotuberculosis* is classified into two biovars according to nitrate reduction activity including biovar *ovis* and biovar *equi* (Connor et al., 2000; Connor et al., 2007; Oliveira et al., 2016; Guerrero et al., 2018). The biovar *ovis* is a cause of CLA in sheep and

goats, while biovar *equi* causes disease in horses, cattle and buffalo (Dorella et al., 2006; Ruiz et al., 2011; Oliveira et al., 2016). The disease is characterized by abscesses formation in lymph nodes and visceral organs (Çetinkaya et al., 2002; Markey et al., 2013; Umer et al., 2017). *C. pseudotuberculosis* possesses variety of virulence factors that are involved in the pathogenesis of the disease. However, the mechanism of infection is still poorly understood (Dorella et al., 2006). Recently virulence genes related to the pathogenicity of *C. pseudotuberculosis* have been identified using whole genome analysis allowing understanding pathogenicity of this bacterium (Ruiz et al., 2011). Ruiz et al. (2011) reported the

presence of seven putative pathogenicity islands containing several classical virulence factors, including genes encoding adhesion factors, fimbrial subunits, iron uptake and secreted toxins and these genes probably acquired via horizontal gene transfer. The main virulence factor of *C. pseudotuberculosis* is phospholipase D (*plD*) which is an exotoxin that increases vascular permeability and promotes the hydrolysis of cell membrane of the host that facilitates the dissemination of the pathogen from the primary site to secondary sites. Thus, allows bacterial survival in the cells, the invasion of the body and transport to regional lymph nodes by phagocytic cells (Dorella et al., 2006; Baird and Fontaine, 2007). Other virulence genes including *fagA*, *B*, *C* and *D* are involved in the pathogenesis of *C. pseudotuberculosis* and they encode putative iron uptake system allowing intracellular survival of this bacterium (Dorella et al., 2006). It has been previously shown that the CLA is highly prevalent in sheep and goats in Duhok city (Abdulrahman et al., 2020; Issa et al., 2021). However, to our knowledge yet no study has been shown basic information regarding virulence determinant and controlling this pathogen in Duhok. Moreover, no studies have shown the phylogenetic analysis of *C. pseudotuberculosis* isolates based on *rpoB* from CLA from sheep and goats in Iraq. Therefore, the present study was undertaken to identify the presence of virulence genes, to study the susceptibility pattern to antimicrobial agents and to analyse the phylogenetic relationship of *C. pseudotuberculosis* isolates from slaughtered sheep and goats suffering from CLA in Duhok city.

MATERIALS AND METHODS

SAMPLE COLLECTION AND DETECTION OF *C. PSEUDOTUBERCULOSIS*

From 1090 of inspected carcasses of sheep and goats slaughtered at Duhok abattoir, 22 were infected with CLA (Abdulrahman et al., 2020; Issa et al., 2021). All suspected cases of CLA were found to be positive with *C. pseudotuberculosis*. Isolation of *C. pseudotuberculosis* was based on traditional bacteriological methods using colony morphologies, Gram staining, biochemical reactions. Suspected isolates were confirmed by amplification of the specific *C. pseudotuberculosis* target genes as carried out in our previous studies (Abdulrahman et al., 2020; Issa et al., 2021). Isolation and molecular characterization were carried out at Duhok research Centre, College of Veterinary Medicine, University of Duhok.

DETECTION OF VIRULENCE GENES

C. pseudotuberculosis isolates were plated out onto 5% sheep blood agar from glycerol stocks and incubated at 37°C for 24 h. DNA was extracted as described by (de Sá et al., 2013). The following virulence genes were selected: phospholipase D (*plD*), intergral membrane protein

(*fagA*), iron enterobactin transporter (*fagB*), ATP binding cytoplasmic membrane protein (*fagC*) and iron siderophore binding protein (*fagD*). The final volume of 10 µL of PCR reaction was used. Each reaction contains 5.5 µL ready-to-use master mixes (Ruby Taq Master®, Jena Bioscience, Thuringia, Germany), 2.5 µL genomic DNA, 1 µL of each primer (10 pmol). Primers used for the detection of virulence genes are shown in Table 1 and they were synthesized by Macrogen Company (South Korea). The amplification of 40 cycles was performed in a Gene Amp PCR System 9700 Thermo Cycler (Applied Biosystems) according to (de Sá et al., 2013): initial denaturation of 94 °C for 30 s, denaturation at 94 °C for 40 s, annealing for 40 s at 61°C, 58°C, 55°C, 60°C and 61°C for the *plD*, *fagA*, *fagB*, *fagC* and *fagD*, respectively, extension at 72 °C for 40 s and a final extension to 72 °C for 10 min. The estimated size of amplified products for each gene (Table 1) was detected in 1% agarose gels stained with Prime Safe Dye (GeNet Bio, Korea) and viewed under UV light.

ANTIMICROBIAL SUSCEPTIBILITY TEST OF *C. PSEUDOTUBERCULOSIS*

The sensitivity patterns of *C. pseudotuberculosis* isolates against antimicrobial agents was tested using the Kirby-Bauer-disk diffusion method according to Clinical Laboratory and Standards Institute (CLSI) (CLSI, 2015). Yet, no specific guideline has been published from CLSI for antimicrobial susceptibility test of *C. pseudotuberculosis* (Dorella et al., 2006). Therefore, the following antibiotics with concentration (µg/disc) were selected: chloramphenicol (30), cefotaxime (30), doxycycline (30), clarithromycin (15), gentamicin (10), norfloxacin (10), ciprofloxacin (5), clindamycin (2), rifampin (5), amoxicillin (10), erythromycin (15), ceftriaxone (30), levofloxacin (5) and trimethoprim/sulphamethoxazole (25) (Bioanalyse). According to manufacturer's instructions, the susceptibility of the isolates to the antibiotics was measured according to the size of the inhibition zone.

ROPB GENE AMPLIFICATION AND SEQUENCING

The primer pair C2700-F (5'-CGTATGAACATCG-GCCAGGT-3') and C3130-R (5'-TCCATTTTCGC-CGAAGCGCTG-3') was used to amplify partial sequence of the *rpoB* individually according to (Khamis et al., 2004). Primers were synthesised by Macrogen (Seoul, South Korea). A total reaction volume of 50 µl was used. Each reaction contains the following reagents: 25 µl of ready-to-use master mixes (Ruby Taq Master®, Jena Bioscience, Thuringia, Germany), 2 µl of each forward and reverse primer (10 pmol µl⁻¹), 5 µl of template DNA and 16 µl dH₂O. Amplification was performed in a Gene Amp PCR System 9700 Thermo Cycler (Applied Biosystems) using 35 cycles of the following amplification parameters: initial denaturation at 94°C for 3 min, denaturation

Table 1: Details of oligonucleotides primers for detection of *C. pseudotuberculosis* virulence gene

Virulence gene	Primer name	Sequence (5'—3')	Product size (bp)	Ref
<i>p/D</i>	Pld-F	ATG AGG GAG AAA GTT GTT TTA	924	(de Sá et al., 2013)
	Pld-R	TCA CCA CGG GTT ATC CGC		
<i>fagA</i>	FagA_F	AGC AAG ACC AAG AGA CAT GC	245	
	FagA_R	AGT CTC AGC CCA ACG TAC AG		
<i>fagB</i>	FagB_F	GTG AGA AGA ACC CCG GTA TAA G	291	
	FagB_R	TAC CGC ACT TAT TCT GAC ACT G		
<i>fagC</i>	FagC_F	GTT TGG CTA TCT CCT TGG TAT G	173	
	FagC_R	CGA CCT TAG TGT TGA CAT ACC C		
<i>fagD</i>	FagD_F	GAG ACT ATC GAC CAG GCA GA	226	
	FagD_R	ACT TCT TGG GGA GCA GTT CT		

Table 2: Susceptibility profile of *C. pseudotuberculosis* isolates from sheep and goat with CLA (no: 22)

Antibiotics	Concentrations (µg/disc)	R		IM		S	
		No. of isolates	Rate (%)	No. of isolates	Rate (%)	No. of isolates	Rate (%)
Chloramphenicol	30	0	0%	0	0%	22	100%
Cefotaxime (CTX)	30	0	0%	6	27.3%	16	72.7%
Doxycycline (DO)	30	0	0%	0	0%	22	100%
Clarithromycin (CLR)	15	0	0%	2	9.1%	20	90.9%
Gentamicin (CN)	10	1	4.5%	3	13.7%	18	81.8%
Norfloxacin (NOR)	10	0	0%	0	0%	22	100%
Ciprofloxacin (CIP)	5	0	0%	0	0%	22	100%
Clindamycin (DA)	2	0	0%	0	0%	22	100%
Rifampin (RA)	5	2	9.1%	2	9.1%	18	81.8%
Amoxicillin (AX)	10	18	81.8%	2	9.1%	2	9.1%
Erythromycin €	15	0	0%	0	0%	22	100%
Ceftriaxone (CRO)	30	0	0%	0	0%	22	100%
Levofloxacin (Lev)	5	0	0%	0	0%	22	100%
Trimethoprim/sulphamethoxazole (SXT)	25	3	13.6%	4	18.2%	15	68.2%

R: resistance; IM: intermediate; S: Sensitive

at 94°C for 1 min, annealing at 56°C for 1 min, extension at 72°C for 2 min and a final extension step at 72°C for 7 min. The purity and concentration of amplified products were examined by 1% (w/v) agarose gel electrophoresis and NanoDrop 2000C spectrophotometer (Thermo Scientific/ UK). Finally, 40 µl of amplified was sequenced using Sanger sequencing technique by Macrogen, inc Sequencing Service (Seoul, South Korea).

SEQUENCE ANALYSIS AND PHYLOGENETIC TREE

The partial sequences of the *rpoB* were received as .ab1 chromatogram files. The sequence files were viewed, trimmed and analysed using the BioEdit sequence alignment editor version7 (Hall, 1999). Sequencing errors were also checked and corrected in BioEdit. Multiple sequence

alignment with ClustalW and phylogenetic analyses were conducted using Molecular Evolutionary Genetics Analysis (MEGA7) software (Kumar et al., 2016). MEGA7 was used to generate Neighbour-Joining phylogenetic trees using the Jukes-Cantor correction model and Bootstrap (1000 replications) analysis. Basic Local Alignment Search Tool (BLAST) analysis was used for GenBank database searching and also to determine the similarity of the sequenced *rpoB* with references sequences in GenBank database.

RESULTS AND DISCUSSION

VIRULENCE GENES AMONG *C. PSEUDOTUBERCULOSIS*

From 1090 of inspected carcasses of sheep and goats

slaughtered at Duhok abattoir, twenty two were infected with CLA (Abdulrahman et al., 2020; Issa et al., 2021). The twenty two CLA cases were found to be positive with *C. pseudotuberculosis* as mentioned in our previous studies based on phenotypic and molecular characterizations (Abdulrahman et al., 2020; Issa et al., 2021). The twenty two isolates were examined for the presence of the virulence genes including *pld*, *fagA*, *fagB*, *fagC* and *fagD* genes. The results showed that all the virulence genes were detected in the 22 *C. pseudotuberculosis* isolates as shown in Fig. 1.

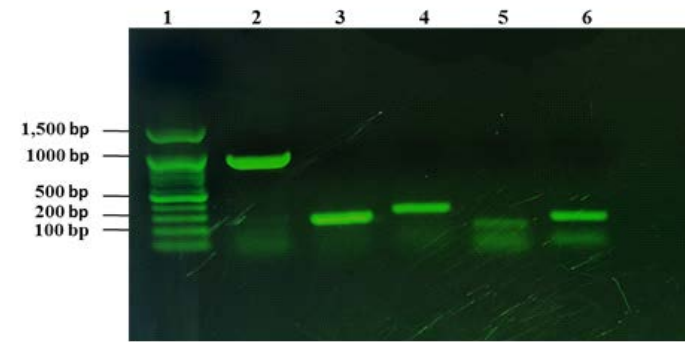


Figure 1: Detection of virulence genes of *C. pseudotuberculosis* isolates from sheep and goats with CLA. Lane 1: 100 bp DNA marker, lane 2: amplification of 924 bp of *pld*, lane 3: amplification of *fagA* (245 bp), lane 4: amplification of 291 bp of *fagB*, lane 5: amplification of *fagC* (173 bp), lane 6: amplified product of *fagD* gene (226 bp).

ANTIMICROBIAL PROFILE OF *C. PSEUDOTUBERCULOSIS* ISOLATES

Fourteen antibiotics were tested against *C. pseudotuberculosis* isolates and the antibiotic susceptibility patterns are shown in Table 2. As shown in Table 2, variation was observed in susceptibility with cefotaxime, clarithromycin, gentamicin, rifampin, amoxicillin and trimethoprim/sulphamethoxazole. All isolates were found to be sensitive 100% to chloramphenicol, doxycycline, norfloxacin, ciprofloxacin, clindamycin, erythromycin, ceftriaxone, levofloxacin. However, cefotaxime, clarithromycin, gentamicin, rifampin, and trimethoprim/sulphamethoxazole showed variation in susceptibility rate at 72.7%, 90.9%, 81.8%, 81.8% and 68.2%, respectively. Low degree of susceptibility was also found with cefotaxime, clarithromycin, gentamicin, rifampin, amoxicillin and trimethoprim/sulphamethoxazole at rate of 27.3%, 9.1%, 13.7%, 9.1%, 9.1% and 18.2, respectively. The overall degree of resistance of the isolated *C. pseudotuberculosis* was very low, with the exception of amoxicillin (81.8%) as listed in Table 2.

PHYLOGENETIC ANALYSIS OF *C. PSEUDOTUBERCULOSIS* ISOLATES

Twenty two partial sequence of *rpoB* gene were obtained as mentioned above in *rpoB* gene amplification and sequencing. Twenty two Partial sequences of *rpoB* sequenced in this

study have been deposited in the GenBank database under accessions number: MT974521 to MT974542). Nucleotide sequence comparison of partial *rpoB* sequences using BLAST analysis against globally published *C. pseudotuberculosis* showed that sequences similarity ranged from 97, 98, 99 and 100% especially with *C. pseudotuberculosis* biovar *ovis* from sheep and goats with CLA. Therefore, to generate phylogenetic tree in addition to partial *rpoB* sequences (*C. pseudotuberculosis* RA1-RA22) obtained in this study, biovar *ovis* (GenBank accessions number: CP001809.3, CP015100.2, CP001829.2 and CP047603.1) were included. To differentiate between biovar *ovis* and *equi*, reference sequences of biotypes *equi* (GenBank accessions number: CP003540.3 and CP003652.3) were also added. To create out group in phylogenetic tree, reference sequence of *C. ulcerans* (GenBank AY492271.1) were included to perform analysis as shown in Fig. 2. The *rpoB* phylogenetic tree showed that 22 *rpoB* sequences were grouped with *C. pseudotuberculosis* biovar *ovis*. Phylogenetic analyses of *rpoB* sequences can clearly distinguish biovar *ovis* from biovar *equi* as shown Fig. 2. Comparative sequence analysis of the 22 *rpoB* sequences (398bp and 132 amino acids) showed that there were total 9 polymorphic nucleotide sites and 5 variable amino acid sites. Pairwise differences ranged from 1 to 8 nucleotide sites and from 1 to 4 amino acid positions. Pairwise differences do not modify the expression of protein and it clearly shown that *rpoB* gene from ovine and caprine isolates were grouped in the same lineage (Fig. 2).

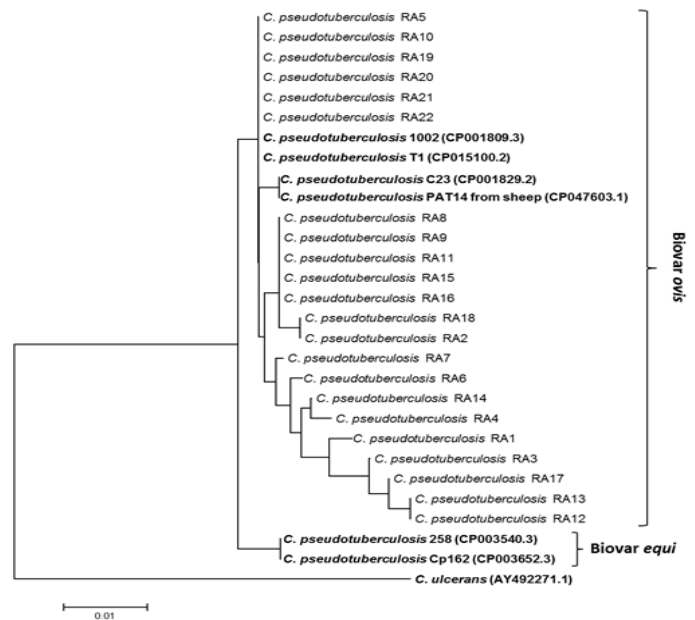


Figure 2: Phylogenetic tree of *C. pseudotuberculosis* isolates based on the *rpoB* gene sequence. The tree was conducted with MEGA7 using Neighbor-joining method and Bootstrap value of 1000 repetitions. Twenty two *rpoB* genes of the *C. pseudotuberculosis* isolates obtained in this study designated as *C. pseudotuberculosis* RA1-RA22 as shown in tree and they were deposited in the GenBank database under accessions number: MT974521 to MT974542).

C. pseudotuberculosis is a facultative intracellular pathogen causing CLA mainly in sheep and goats and it causes economic losses worldwide. The results of our previous studies showed that the prevalence of CLA in sheep and goats is high in Duhok city (Abdulrahman et al., 2020; Issa et al., 2021). Similarly, CLA is highly prevalent in small ruminants globally. Consequently, this study reported for the first time the investigation of virulence genes, antibiotic susceptibility and phylogenetic analysis of 22 *C. pseudotuberculosis* isolates from slaughtered sheep and goats suffering from CLA for better understanding the epidemiology of *C. pseudotuberculosis* in Duhok city, Iraq.

In this study, five important virulence genes including *pld*, *fagA*, *B*, *C* and *D* were selected to confirm their presence in *C. pseudotuberculosis* isolates. The *pld* encodes the phospholipase D-PLD exotoxin enzyme that causes increasing vascular permeability and facilitates the spreading of the pathogen within the host (Dorella et al., 2006; Baird and Fontaine, 2007). The results showed that *pld* gene was found in all isolated *C. pseudotuberculosis* characterized in this study. The results were in agreement with other studies (Çetinkaya et al., 2002; Pacheco et al., 2007; de Sá et al., 2013; Guerrero et al., 2018; Li et al., 2018). The mechanism of *pld* gene expression still understood. However, comparative proteomic analyses of the two *C. pseudotuberculosis* strains from sheep and goat with CLA revealed the expression of this protein only in virulent isolate (Pacheco et al., 2011). A study by McNamara et al. (1994) confirmed that *pld* gene is a virulence determinant of *C. pseudotuberculosis* that increases the maintenance and spread of the bacteria within the host because and they showed that the mutation of *pld* gene decreased the virulence of *C. pseudotuberculosis* and reduced ability to cause CLA.

The *fagA*, *B*, *C* and *D* encode putative iron uptake system allowing intracellular survival of *C. pseudotuberculosis* and they are organized in an operon involved in iron uptake which is located downstream from the *pld* gene and are expressed rarely *in vitro* (Billington et al., 2002). However, they increase the virulence of *C. pseudotuberculosis* when expressed *in vivo* indicating that the expression of these genes may be required host factors (Billington et al., 2002). The results of this study confirmed the presence *fagA*, *B*, *C* and *D* were 100% in all isolates. Similarly, a study by Li et al. (2018) found that *fagA*, *B*, *C* and *D* were found 100% in all 40 *C. pseudotuberculosis* isolates from goats with CLA.

Likewise, *fagA*, *fagC*, and *fagD* virulence genes were identified in the 100% and the *fagB* was only identified in 56 (98.2%) of the *C. pseudotuberculosis* isolates (57/57) from sheep and goats with CLA superficial abscesses (Guerrero

et al., 2018). In a study by de Sá et al. (2013) of 168 *C. pseudotuberculosis* isolates from sheep and goats with CLA (140 isolates from superficial lesions, and 23 from visceral lesions) were examined, *fagA*, and *fagB* were identified in the 100% and *fagC* detected in the 99.4% (167/168) of examined isolates. However, regarding *fagD* the results were different and it was identified only in the 95.2% (160/168) and interestingly, these isolates were obtained from CLA superficial abscesses (de Sá et al., 2013). The *C. pseudotuberculosis* isolates analysed in this study were isolates from mediastinal CLA (visceral form) and similarly the virulence genes were identified 100% in the isolates from animals with visceral form of CLA (de Sá et al., 2013). The differences of virulence factors between visceral and superficial CLA suggests differences in the invasion perspective of the *C. pseudotuberculosis* strains. The presence of *pld*, *fagA*, *B*, *C* and *D* in the 100% of the *C. pseudotuberculosis* isolates indicating high virulence potential and those genes could be used as candidates for vaccine production (Billington et al., 2002; Pacheco et al., 2011).

Although the disease occurs worldwide causing major economic losses in sheep and goat industry areas, no effective treatment exists and yet no specific guideline has been published form CLSI for antimicrobial susceptibility test of *C. pseudotuberculosis*. Therefore, in the current study the efficiency of 14 antibiotics were tested against *C. pseudotuberculosis* isolates. All isolates were found to be sensitive 100% to chloramphenicol, doxycycline, norfloxacin, ciprofloxacin, clindamycin, erythromycin, ceftriaxone, levofloxacin. However, cefotaxime, clarithromycin, gentamicin, rifampin, and trimethoprim/sulphamethoxazole showed variation in susceptibility. The overall resistance degree was very low, with the exception of amoxicillin (Table 2). Sensitivity of the *C. pseudotuberculosis* isolates against different antimicrobial has been reported previously in many studies (Connor et al., 2007; Abebe and Sisay Tessema, 2015; Algammal, 2016; Li et al., 2018).

The *16S rRNA* gene sequence was used most commonly for identification of bacteria and phylogeny as molecular marker. However, high polymorphism area in the *rpoB* gene was identified and used for the identification of *C. pseudotuberculosis* from clinical samples (Khamis et al., 2004). It was found that the *rpoB* is a more suitable sequence to differentiate *C. pseudotuberculosis* subspecies than 16S rRNA because of higher degree of nucleotide polymorphism (Khamis et al., 2004). Therefore, the analysis of polymorphisms in the partial *rpoB* sequence was used as a diagnostic tool that differentiates *C. pseudotuberculosis* strains at subspecies level (Retamal et al., 2011). In the present study sequencing of the partial *rpoB* showed that the 22 isolates confirmed as *C. pseudotuberculosis* based on BLAST analysis and they were 97, 98, 99 and 100% similar to the *C. pseudotuberculosis* biovar *ovis*. Phylogenetic

analysis of the 22 partial *rpoB* (Fig. 2) grouped ovine and caprine in the same clade and they grouped with biovar *ovis* from reference sequences. The results of the current study revealed that the *rpoB* differentiates biovar *ovis* from biovar *equi* because they are grouped into two different clades. Similarly a study by Guerrero et al. (2018) confirmed that the phylogenetic analysis based on the *rpoB* gene confirmed the subspecies differentiation and allowed the identification of point mutation in caprine isolates without modifying the expression of protein. In contrast, high polymorphism of the *rpoB* gene allowed caprine and ovine isolates into different lineages and the differences in the grouping could be due to the limited number of isolates and small geographical area (Retamal et al., 2011). Another housekeeping gene was also used as a candidate for differentiation of subspecies *ovis* form *equi* as shown by Li et al. (2018).

CONCLUSION

The results of the present study revealed that virulence genes including *pld*, *fagA*, *B*, *C* and *D* were identified in the all *C. pseudotuberculosis* isolated from sheep and goat with mediastinal lymph nodes CLA. The high occurrence of the virulent genes may indicate that these strains are highly virulent and they possess high virulence potential. *C. pseudotuberculosis* also showed sensitivity toward the majority of antibiotics used in this study. Phylogenetic tree of partial sequences of the *rpoB* gene showed that the biovar *ovis* isolates from both sheep and goat are grouped together in the same lineage and the nucleotide variation between the sequences does not change the protein expression. Thus confirming that the *rpoB* gene allows differentiation of *C. pseudotuberculosis* isolates at biotypes level. However, for the future larger number of the *C. pseudotuberculosis* isolates both visceral and superficial lymph nodes and from wider geographical areas can be included for better study of virulence potential and identification of *C. pseudotuberculosis* isolates at subspecies level using phylogeny based on *rpoB*.

CONFLICT OF INTEREST

There is no conflict of interest regarding the publication of this paper.

REFERENCES

- Abdulrahman RF, Abdullah MA, Kareem KH, Najeeb ZD, Hameed HM (2020). Histopathological and molecular studies of caseous lymphadenitis in sheep and goats in Duhok city. Iraq. J. Explor. Anim. Med. Res. 10(2):134-140.
- Abebe D, Sisay Tessema T (2015). Determination of *Corynebacterium pseudotuberculosis* prevalence and antimicrobial susceptibility pattern of isolates from lymph

- nodes of sheep and goats at an organic export abattoir. Modjo, Ethiopia. Lett. Appl. Microbiol. 61:469-476. <https://doi.org/10.1111/lam.12482>
- Algammal A (2016). Molecular characterization and antibiotic susceptibility of *Corynebacterium pseudotuberculosis* isolated from sheep and goats suffering from caseous lymphadenitis. Zagazig Vet. J. 44:1-8. <https://doi.org/10.21608/zvjz.2016.7826>
- Baird GJ, Fontaine MC (2007). *Corynebacterium pseudotuberculosis* and its role in ovine caseous lymphadenitis. Comp. Path. 137:179-210. <https://doi.org/10.1016/j.jcpa.2007.07.002>
- Billington SJ, Esmay PA, Songer J, Jost B, Hoppert M, Liebl W (2002). Identification and role in virulence of putative iron acquisition genes from *Corynebacterium pseudotuberculosis*. FEMS Microbiol. Lett. 208:41-45. <https://doi.org/10.1111/j.1574-6968.2002.tb11058.x>
- Çetinkaya B, Karahan M, Atil E, Kalin R, De Baere T, Vaneechoutte M (2002). Identification of *Corynebacterium pseudotuberculosis* isolates from sheep and goats by PCR. Vet. Microbiol. 88:75-83. [https://doi.org/10.1016/S0378-1135\(02\)00089-5](https://doi.org/10.1016/S0378-1135(02)00089-5)
- CLSI (2015). Informational supplement susceptibility testing; twenty-fifth performance standards for antimicrobial, in: Clinical and Laboratory Standards Institute. Wayne, PA, USA.
- Connor KM, Fontaine MC, Rudge K, Baird GJ, Donache W (2007). Molecular genotyping of multinational ovine and caprine *Corynebacterium pseudotuberculosis* isolates using pulsed-field gel electrophoresis. Vet. Rec. 38:613-623. <https://doi.org/10.1051/vetres:2007013>
- Connor KM, Quirie MM, Baird G, Donachie W (2000). Characterization of United Kingdom isolates of *Corynebacterium pseudotuberculosis* using pulsed-field gel electrophoresis. J. Clin. Microbiol. 38:2633-2637. <https://doi.org/10.1128/JCM.38.7.2633-2637.2000>
- de Sá MCA, Gouveia GV, da Costa Krewer C, Veschi JLA, de Mattos-Guaraldi AL, da Costa MM (2013). Distribution of PLD and FagA, B, C and D genes in *Corynebacterium pseudotuberculosis* isolates from sheep and goats with caseous lymphadenitis. Genet. Mol. Biol. 36:265-268. <https://doi.org/10.1590/S1415-47572013005000013>
- Dorella FA, Pacheco LGC, Oliveira SC, Miyoshi A, Azevedo V (2006). *Corynebacterium pseudotuberculosis*: microbiology, biochemical properties, pathogenesis and molecular studies of virulence. Vet. Rec. 37:201-218. <https://doi.org/10.1051/vetres:2005056>
- Dorella FA, Pacheco LGC, Oliveira SC, Miyoshi A, Azevedo V (2006). *Corynebacterium pseudotuberculosis*: Microbiology, biochemical properties, pathogenesis and molecular studies of virulence. Vet. Res. 37:201-218. <https://doi.org/10.1051/vetres:2005056>
- Guerrero JAV, de Oca Jiménez RM, Acosta Dibarrat J, León FH, Morales-Erasto V, Salazar HGM (2018). Isolation and molecular characterization of *Corynebacterium pseudotuberculosis* from sheep and goats in Mexico. Microb. Path. 117:304-309. <https://doi.org/10.1016/j.micpath.2018.02.031>
- Guimarães AS, Carmo FB, Pauletti RB, Seyffert N, Ribeiro D, Lage AP, Heinemann MB, Miyoshi A, Azevedo V, Gouveia AMG (2011). Caseous lymphadenitis: Epidemiology, diagnosis, and control. IIOAB J. 2:33-43.
- Hall TA (1999). BioEdit: a user-friendly biological sequence alignment editor and analysis. Nucl Acids. 41:95-98.

- Issa NA, Abdulrahman RF, Taha ZM, Hussain MM, Kareem KH, Hamadamin HI, Najeeb ZD, Ahmed BM, Hameed HM (2021). Prevalence and molecular investigation of caseous lymphadenitis among the slaughtered sheep at Duhok Abattoirs; experimental infection with *Corynebacterium pseudotuberculosis* in rabbits. *Irqi J. Vet. Sci.* 35:263-270. <https://doi.org/10.33899/ijvs.2020.126772.1377>
- Khamis A, Raoult D, Scola BL (2004). *rpoB* gene sequencing for identification of *Corynebacterium* species. *Clin. Microbiol.* 42:3925-3931. <https://doi.org/10.1128/JCM.42.9.3925-3931.2004>
- Kumar S, Stecher G, Tamura K (2016). Molecular Evolutionary Genetics Analysis for bigger datasets brief communication. *Mol. Biol. Evol.* 33:1870-1874. <https://doi.org/10.1093/molbev/msw054>
- Li H, Yang H, Zhou Z, Li X, Yi, W, Xu Y, Wang Z, Hu S (2018). Isolation, antibiotic resistance, virulence traits and phylogenetic analysis of *Corynebacterium pseudotuberculosis* from goats in southwestern China. *Small Rum. Res.* 168:69-75. <https://doi.org/10.1016/j.smallrumres.2018.09.015>
- Markey B, Leonard F, Archambault M, Cullinane A, Maguire D (2013). *Clinical Veterinary Microbiology*, 2nd Editio. ed. Mosby Ltd, Dublin.
- McNamara PJ, Bradley GA, Songer GJ (1994). Targeted mutagenesis of the phospholipase D gene results in decreased virulence of *Corynebacterium pseudotuberculosis*. *Mol. Microbiol.* 12:921-930. <https://doi.org/10.1111/j.1365-2958.1994.tb01080.x>
- Oliveira A, Teixeira P, Azevedo M, Jamal SB, Tiwari S, Almeida S, Silva A, Barh D, Dorneles EMS, Haas DJ, Heinemann MB, Ghosh P, Lage AP, Figueiredo H, Ferreira RS, Azevedo V (2016). *Corynebacterium pseudotuberculosis* may be under anagenesis and biovar *Equi* forms biovar *Ovis*: A phylogenetic inference from sequence and structural analysis. *BMC Microbiol.* 16:100. <https://doi.org/10.1186/s12866-016-0717-4>
- Pacheco LG, Slade SE, Seyffert N, Santos AR, Castro TL, Silva WM, Santos AV, Santos SG, Farias LM, Carvalho MA, Pimenta AM, Meyer R, Silva A, Scrivens JH, Oliveira SC, Miyoshi A, Dowson CG, Azevedo V (2011). A combined approach for comparative exoproteome analysis of *Corynebacterium pseudotuberculosis*. *BMC Microbiol.* 11:12. <https://doi.org/10.1186/1471-2180-11-12>
- Pacheco LGC, Pena RR, Castro TLP, Dorella FA, Bahia RC, Carminati R, Frota MNL, Oliveira SC, Meyer R, Alves FSF, Miyoshi A, Azevedo V (2007). Multiplex PCR assay for identification of *Corynebacterium pseudotuberculosis* from pure cultures and for rapid detection of this pathogen in clinical samples. *Med. Microbiol.* 56:480-486. <https://doi.org/10.1099/jmm.0.46997-0>
- Parin U, Kirkan S, Ural K, Savasan S, Erbas G, Gultekin M, Yuksel H, Balikli C (2018). Molecular identification of *Corynebacterium pseudotuberculosis* in sheep Caseous lymphadenitis (CL) is a bacterial disease that causes considerable economic loss in sheep and goat industries (loss of skin and carcass value, loss of weight, loss. *Acta Vet.* 87:3-8. <https://doi.org/10.2754/avb201887010003>
- Retamal P, Ríos M, Cheuquepán F, Abalos F, Pizarro L, Borie C, Gutierrez J (2011). Host associated polymorphisms in the *Corynebacterium pseudotuberculosis rpoB* gene sequence. *Vet Microbiol.* 151:400-403. <https://doi.org/10.1016/j.vetmic.2011.03.012>
- Ruiz JC, D'Afonseca V, Silva A, Ali A, Santos AR, Turk MZ, Castro TLP, Abreu VAC, Trost E, Baumbach J, Tauch A, CMP, McCulloch J, Cerdeira LT, Ramos RTJ, Zerlotini A, Coser M, Oliveira LM, Castro IM, Rabelo EM, Lobo FP, Dias C, Ferro JA (2011). Evidence for reductive genome evolution and lateral acquisition of virulence functions in Two *Corynebacterium pseudotuberculosis* strains. *PLoS ONE.* 6(4):e18551. <https://doi.org/10.1371/journal.pone.0018551>
- Umer M, Abba Y, Abdullah FFJ, Saleh MMW, Haron HW, Saharee AA, Bin Ariff A, Baiee FHA, Hambali IU, Sharif A (2017). Caseous lymphadenitis in small ruminants: *Inter. J. Vet. Sci. Anim. Husb.* 2:23-31.